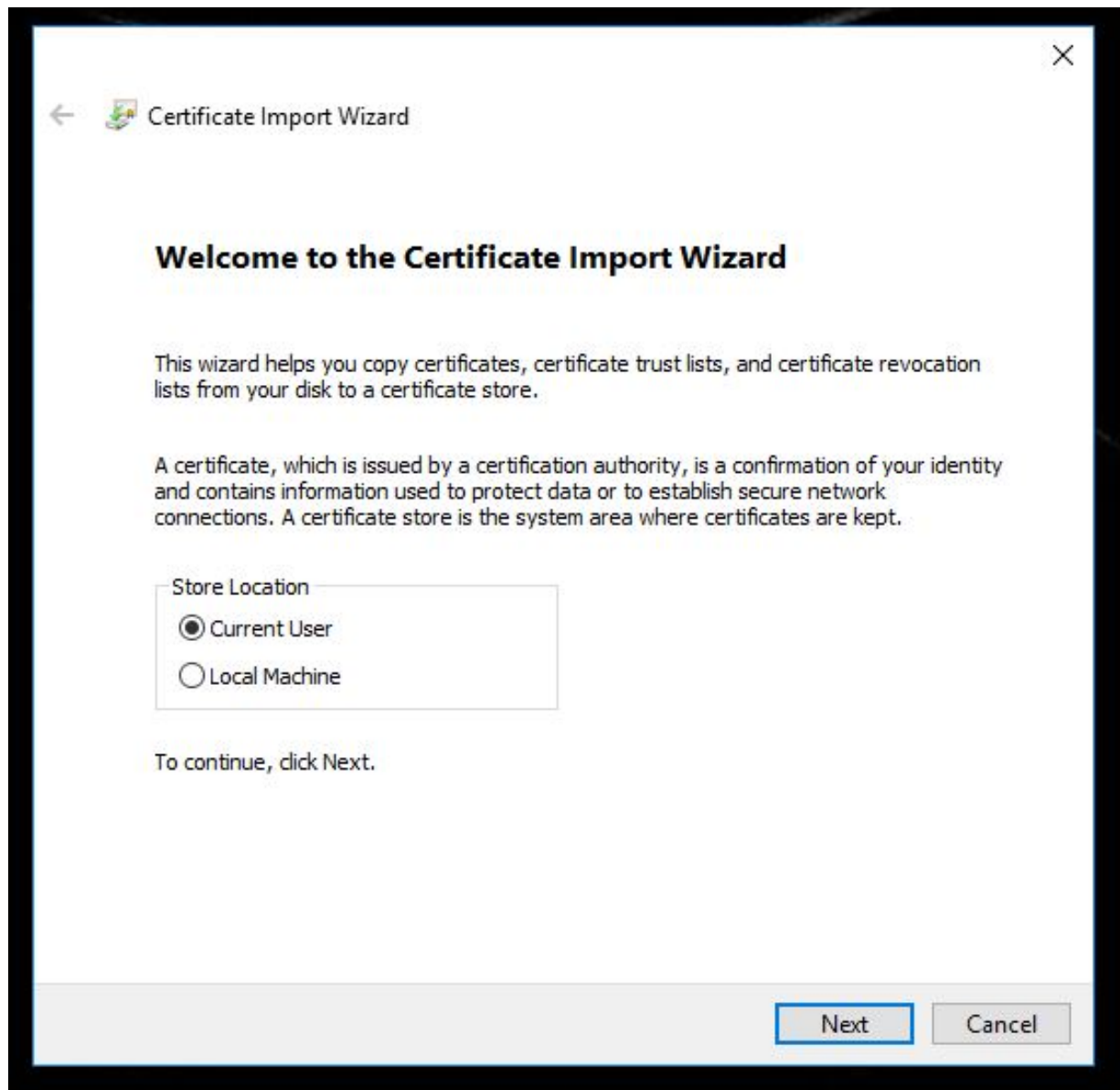
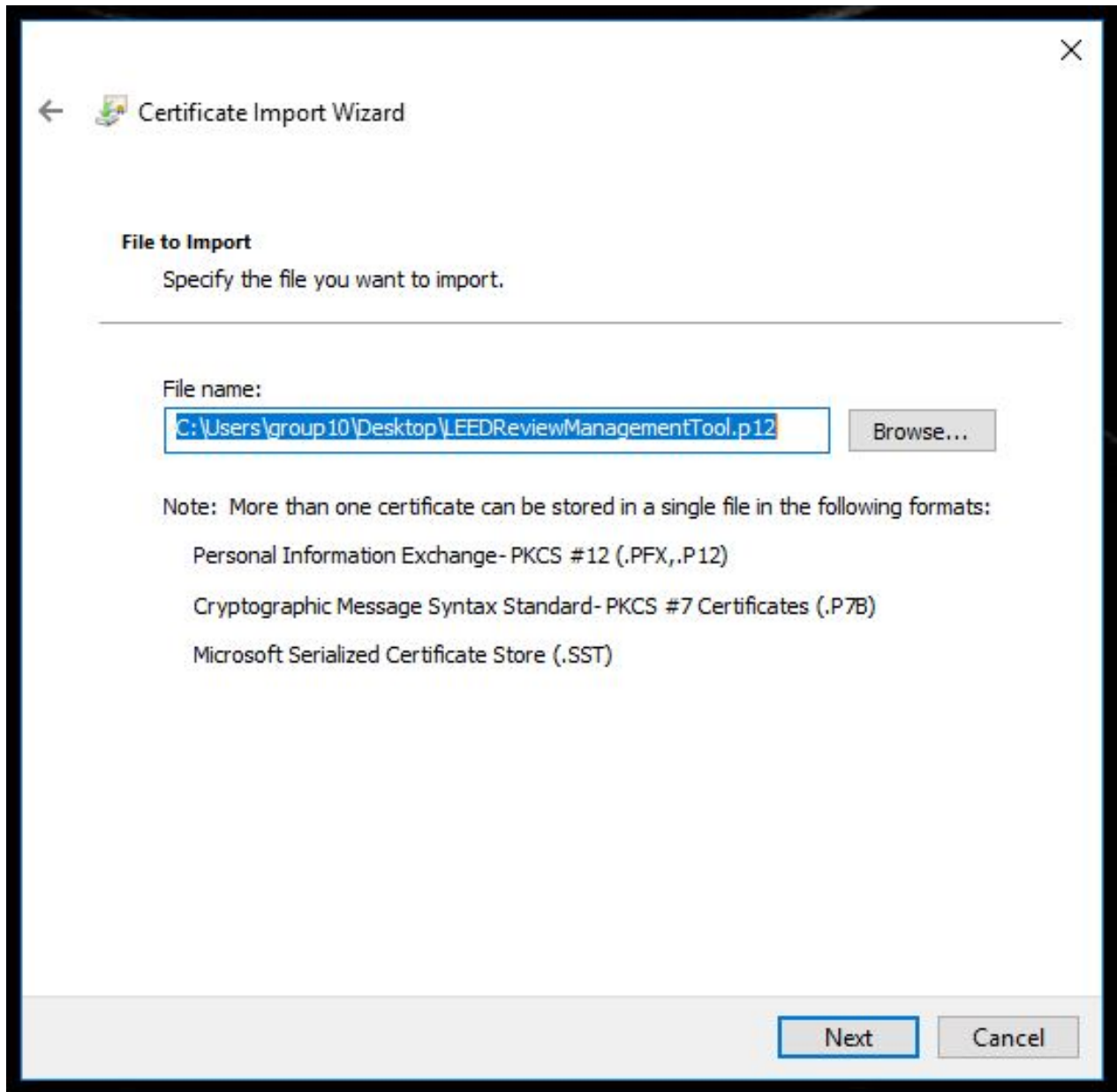


❖ Follow Instruction for manually installing LEEDRMT trust certificate (Here CA – David Griffith)

- 1) Open the file LEEDReviewManagementTool.p12 attached with this Document
And click next:-



2) Click Next: -



The image shows a Windows 'Certificate Import Wizard' dialog box. It has a title bar with a back arrow, a certificate icon, and the text 'Certificate Import Wizard'. The main area is titled 'File to Import' with the instruction 'Specify the file you want to import.' Below this is a 'File name:' label followed by a text box containing the path 'C:\Users\group10\Desktop\LEEDReviewManagementTool.p12'. To the right of the text box is a 'Browse...' button. A 'Note' section follows, stating 'More than one certificate can be stored in a single file in the following formats:' and listing three formats: 'Personal Information Exchange- PKCS #12 (.PFX,.P12)', 'Cryptographic Message Syntax Standard- PKCS #7 Certificates (.P7B)', and 'Microsoft Serialized Certificate Store (.SST)'. At the bottom right are 'Next' and 'Cancel' buttons.

← Certificate Import Wizard

File to Import
Specify the file you want to import.

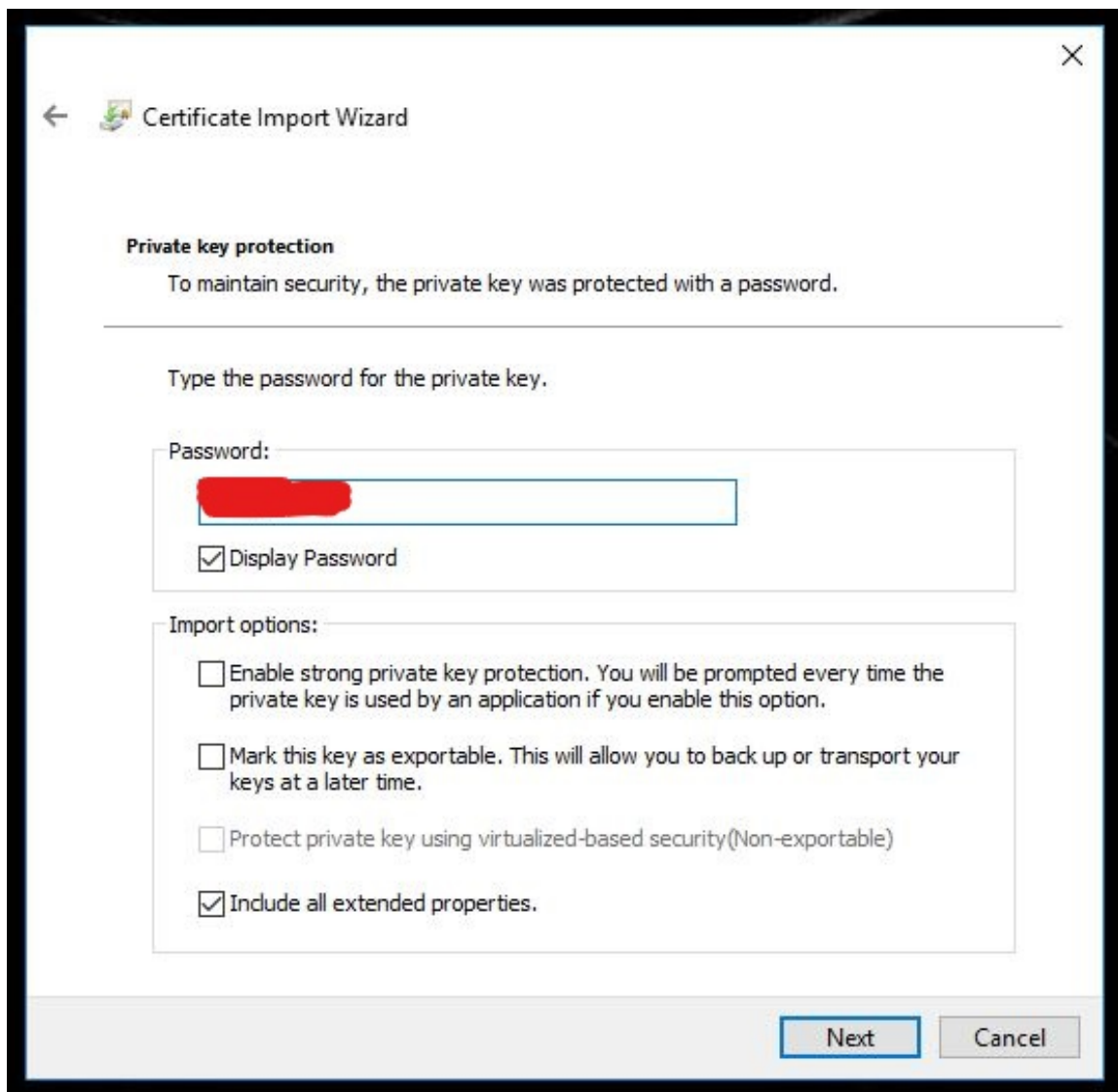
File name:
 Browse...

Note: More than one certificate can be stored in a single file in the following formats:

- Personal Information Exchange- PKCS #12 (.PFX,.P12)
- Cryptographic Message Syntax Standard- PKCS #7 Certificates (.P7B)
- Microsoft Serialized Certificate Store (.SST)

Next Cancel

3) Now enter password (to get the password contact USGBC) and click next.



The image shows a Windows dialog box titled "Certificate Import Wizard". It has a back arrow icon on the left and a close 'X' icon on the right. The main content area is titled "Private key protection" and contains the text "To maintain security, the private key was protected with a password." Below this is a horizontal line and the instruction "Type the password for the private key." There is a text input field labeled "Password:" which contains a redacted password. Below the input field is a checkbox labeled "Display Password" which is checked. Below this is another section titled "Import options:" containing four checkboxes: "Enable strong private key protection. You will be prompted every time the private key is used by an application if you enable this option." (unchecked), "Mark this key as exportable. This will allow you to back up or transport your keys at a later time." (unchecked), "Protect private key using virtualized-based security(Non-exportable)" (unchecked), and "Include all extended properties." (checked). At the bottom right of the dialog are two buttons: "Next" and "Cancel".

← Certificate Import Wizard

Private key protection

To maintain security, the private key was protected with a password.

Type the password for the private key.

Password:

☒ Display Password

Import options:

☐ Enable strong private key protection. You will be prompted every time the private key is used by an application if you enable this option.

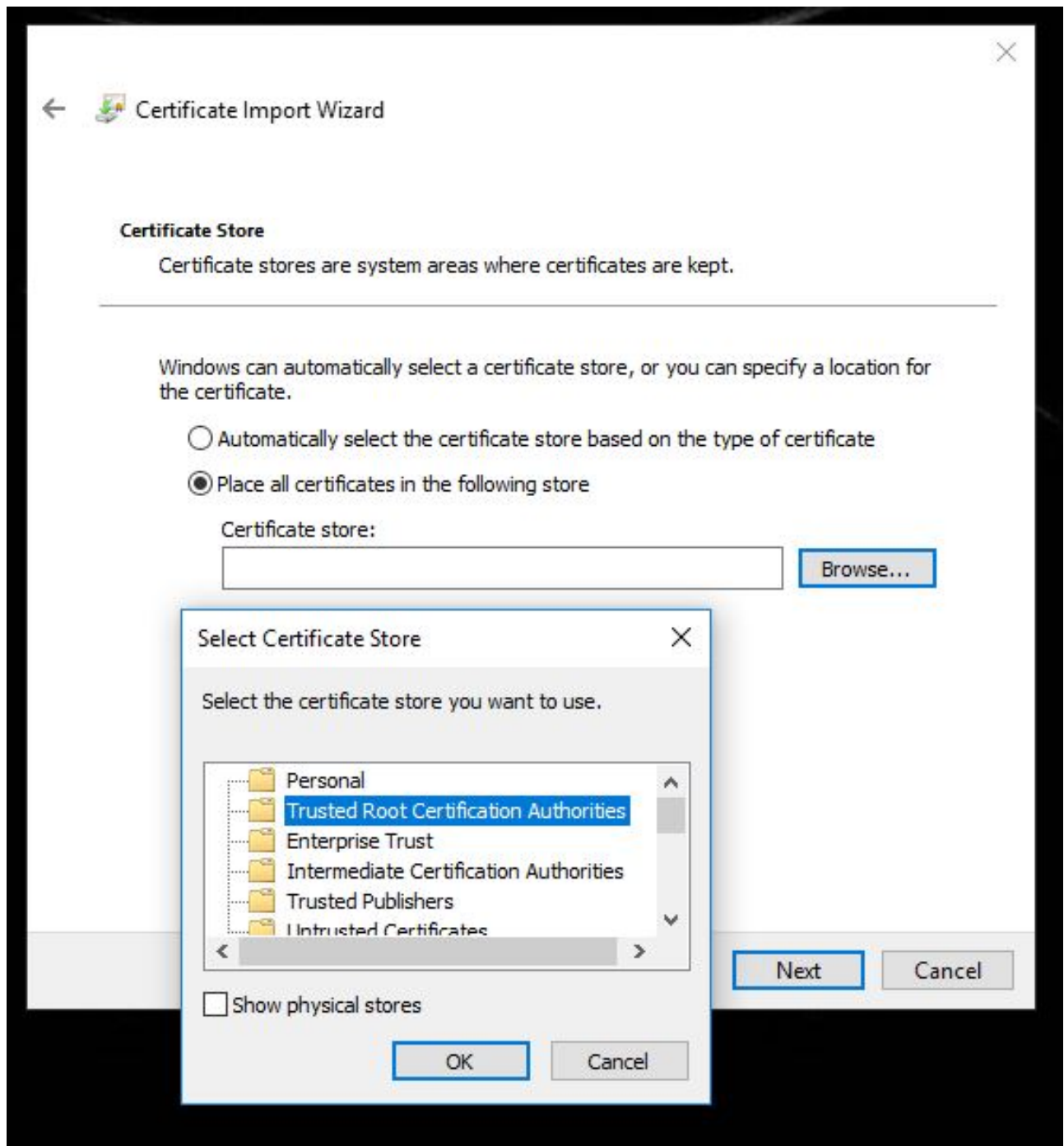
☐ Mark this key as exportable. This will allow you to back up or transport your keys at a later time.

☐ Protect private key using virtualized-based security(Non-exportable)

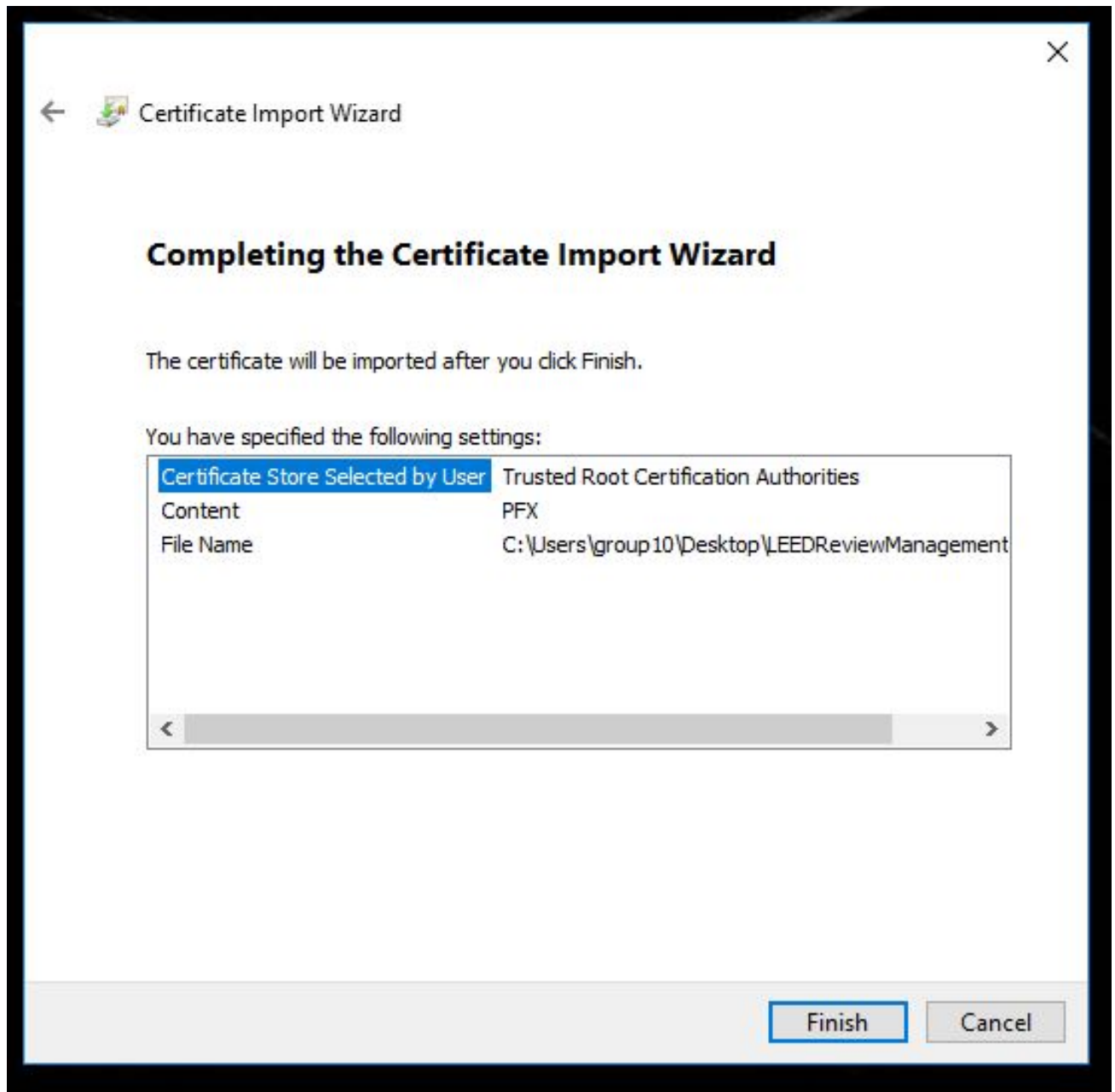
☒ Include all extended properties.

Next Cancel

- 4) Select `Place certificate....` option and click browse and then select `Trusted Root Certification Authorities` and then press ok then click next.



5) Click Finish.



6) Select `YES` option in Security Warning (Here CA – David Griffith) who is USGBC trusted Dev



7) Certificate installed successfully.

